



Plainte

uit Overture-Suite TWV.55:D21

G.Ph. Telemann
arr: J. van der Linden

Sopraan

Alt

Tenor

Bas

Fluit

Hobo

Viool

Klar

Cello

Basklarinet

6

s

a

t

bb

fl

h

v

kl

c

B.kl.

12

s
a
t
bb
fl
h
v
kl
c
B.kl.

Detailed description: This block contains the musical score for measures 12 through 16. It features ten staves for different instruments: soprano (s), alto (a), tenor (t), bassoon (bb), flute (fl), horn (h), violin (v), clarinet (kl), cello (c), and double bass (B.kl.). The key signature is two sharps (F# and C#). The music is written in a common time signature. The vocal parts (s, a, t) have rests in measures 12-14 and enter in measure 15. The instrumental parts (bb, fl, h, v, kl, c, B.kl.) play a rhythmic accompaniment throughout. Measure 16 ends with a double bar line and repeat dots.

17

s
a
t
bb
fl
h
v
kl
c
B.kl.

Detailed description: This block contains the musical score for measures 17 through 21. It features the same ten staves as the previous block. The key signature remains two sharps. The vocal parts (s, a, t) have rests in measures 17-19 and enter in measure 20. The instrumental parts (bb, fl, h, v, kl, c, B.kl.) continue with their accompaniment. Measure 21 ends with a double bar line and repeat dots.



23

s
a
t
bb
fl
h
v
kl
c
B.kl.

Detailed description: This block contains the musical score for measures 23 through 28. It features ten staves for different instruments: soprano (s), alto (a), tenor (t), bassoon (bb), flute (fl), horn (h), violin (v), clarinet (kl), cello (c), and double bass (B.kl.). The key signature is one sharp (F#) and the time signature is 4/4. The vocal parts (s, a, t) have rests in measures 23 and 24. The bassoon (bb) and violin (v) have melodic lines starting in measure 23. The flute (fl) and horn (h) have melodic lines starting in measure 25. The clarinet (kl) and cello (c) have rhythmic accompaniment. The double bass (B.kl.) has a steady bass line.

29

s
a
t
bb
fl
h
v
kl
c
B.kl.

Detailed description: This block contains the musical score for measures 29 through 34. It features the same ten staves as the previous block. In measure 29, the soprano (s) and alto (a) parts have rests. The tenor (t) part has a melodic line. The bassoon (bb) part has a melodic line. The flute (fl) part has a melodic line. The horn (h) part has a melodic line. The violin (v) part has a melodic line. The clarinet (kl) part has a melodic line. The cello (c) part has a melodic line. The double bass (B.kl.) part has a melodic line. In measure 30, the soprano (s) and alto (a) parts have rests. The tenor (t) part has a melodic line. The bassoon (bb) part has a melodic line. The flute (fl) part has a melodic line. The horn (h) part has a melodic line. The violin (v) part has a melodic line. The clarinet (kl) part has a melodic line. The cello (c) part has a melodic line. The double bass (B.kl.) part has a melodic line. In measure 31, the soprano (s) and alto (a) parts have rests. The tenor (t) part has a melodic line. The bassoon (bb) part has a melodic line. The flute (fl) part has a melodic line. The horn (h) part has a melodic line. The violin (v) part has a melodic line. The clarinet (kl) part has a melodic line. The cello (c) part has a melodic line. The double bass (B.kl.) part has a melodic line. In measure 32, the soprano (s) and alto (a) parts have rests. The tenor (t) part has a melodic line. The bassoon (bb) part has a melodic line. The flute (fl) part has a melodic line. The horn (h) part has a melodic line. The violin (v) part has a melodic line. The clarinet (kl) part has a melodic line. The cello (c) part has a melodic line. The double bass (B.kl.) part has a melodic line. In measure 33, the soprano (s) and alto (a) parts have rests. The tenor (t) part has a melodic line. The bassoon (bb) part has a melodic line. The flute (fl) part has a melodic line. The horn (h) part has a melodic line. The violin (v) part has a melodic line. The clarinet (kl) part has a melodic line. The cello (c) part has a melodic line. The double bass (B.kl.) part has a melodic line. In measure 34, the soprano (s) and alto (a) parts have rests. The tenor (t) part has a melodic line. The bassoon (bb) part has a melodic line. The flute (fl) part has a melodic line. The horn (h) part has a melodic line. The violin (v) part has a melodic line. The clarinet (kl) part has a melodic line. The cello (c) part has a melodic line. The double bass (B.kl.) part has a melodic line.

Arrangement toegewezen aan Jeanne van der Linden onder



37

Score for measures 37-46. The score is for a full band and vocal ensemble. The instruments are: s (Soprano), a (Alto), t (Tenor), bb (Bassoon), fl (Flute), h (Harmonica), v (Violin), kl (Clarinet), c (Cello), and B.kl. (Bass Clarinet). The key signature is two sharps (F# and C#). The music features a vocal melody in the soprano and alto parts, with instrumental accompaniment for the rest of the ensemble.

47

Score for measures 47-56. This section includes first and second endings for all instruments and vocal parts. The key signature remains two sharps. The first ending leads to a repeat, and the second ending concludes the piece. The vocal parts have lyrics written below the notes.

Arrangement toegewezen aan Jeanne van der Linden onder

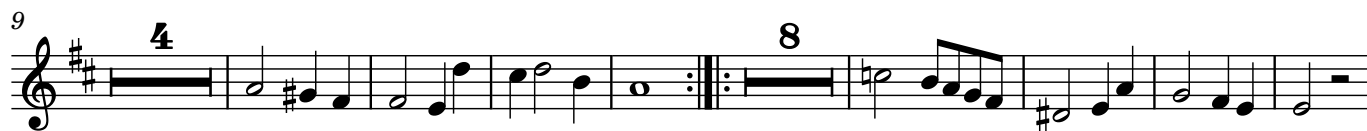


Sopraan

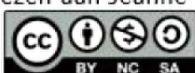
Plainte

uit Ouverture-Suite TWV.55:D21

G.Ph. Telemann
arr: J. van der Linden



Arrangement toegewezen aan Jeanne van der Linden onder

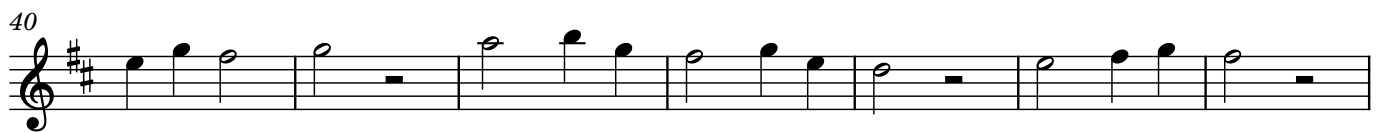
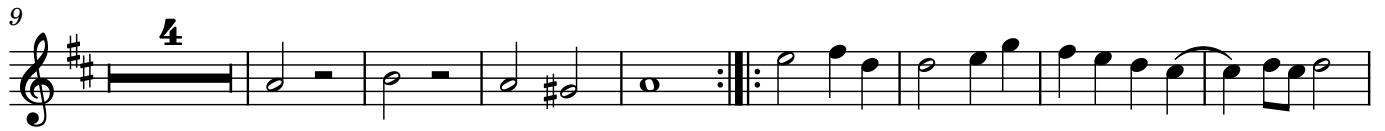


Alt

Plainte

uit Ouverture-Suite TWV.55:D21

G.Ph. Telemann
arr: J. van der Linden



Arrangement toegewezen aan Jeanne van der Linden onder



Bas

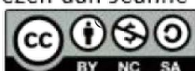
Plainte

uit Ouverture-Suite TWV.55:D21

G.Ph. Telemann
arr: J. van der Linden



Arrangement toegewezen aan Jeanne van der Linden onder

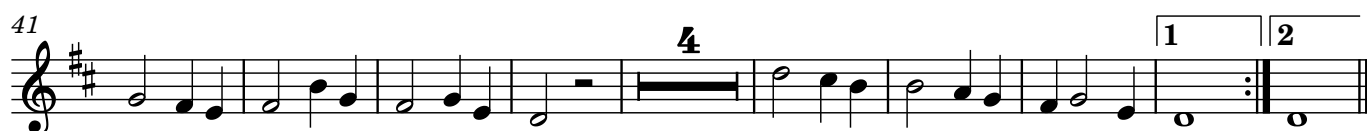


Fluit

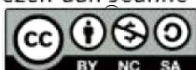
Plainte

uit Ouverture-Suite TWV.55:D21

G.Ph. Telemann
arr: J. van der Linden



Arrangement toegewezen aan Jeanne van der Linden onder

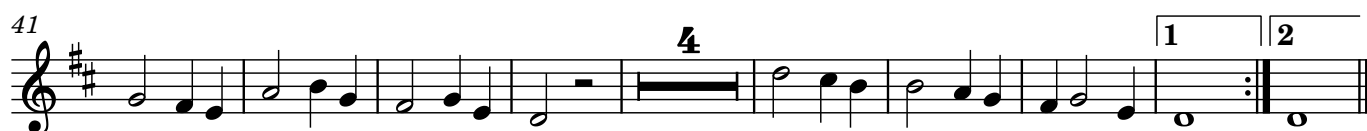


Hobo

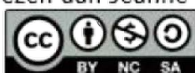
Plainte

uit Ouverture-Suite TWV.55:D21

G.Ph. Telemann
arr: J. van der Linden



Arrangement toegewezen aan Jeanne van der Linden onder



Viool

Plainte

uit Overture-Suite TWV.55:D21

G.Ph. Telemann
arr: J. van der Linden



Arrangement toegewezen aan Jeanne van der Linden onder



Cello

Plainte

uit Overture-Suite TWV.55:D21

G.Ph. Telemann
arr: J. van der Linden



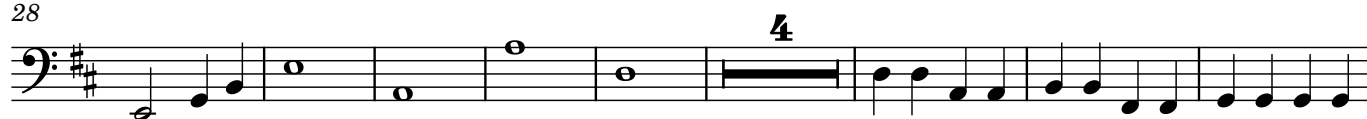
8



17



28



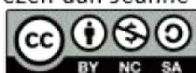
40



49



Arrangement toegewezen aan Jeanne van der Linden onder



Basklarinet

Plainte

uit Ouverture-Suite TWV.55:D21

G.Ph. Telemann
arr: J. van der Linden

